



**SANTA ANA**  
**COLLEGE**



# LEADING WITH EQUITY: SAC COMPLETES

**FALL 2024 CONVOCATION**  
**AUG. 13, 2024 | PHILLIPS HALL**

**Guiding students to upskill, complete certificates, degrees or university transfer for long-term career success.**

**HOSTED BY SAC PRESIDENT**  
**DR. ANNEBELLE NERY**



**DR. ANNEBELLE NERY**  
College President



SANTA ANA COLLEGE

# Distinguished Guests





**MARVIN MARTINEZ**

**Chancellor**

Rancho Santiago Community

College District



**SANTA ANA COLLEGE**





**DAISY TONG**

Board of Trustees

Vice President

Rancho Santiago Community

College District



**SANTA ANA COLLEGE**



# MADELINE GRANT

## FARSCCD President

Rancho Santiago Community  
College District



SANTA ANA COLLEGE



**CLAIRE COYNE**  
Academic Senate  
President

Santa Ana College



**SANTA ANA COLLEGE**



**SARAH SALAS**  
CSEA Chapter 579  
President  
School of Continuing Education





# JESSICA VELEZ

## ASG President

Santa Ana College



SANTA ANA COLLEGE





**DR. ANNEBELLE NERY**  
College President



# This Week's Agenda



SANTA ANA COLLEGE

## PD FLEX WEEK August 12-16, 2024

**Monday**  
August 12

● SACDay/CAP Fest, New Faculty Institute, & Workshops

**Tuesday**  
August 13

● Convocation, Campus Tour, Faculty Headshots, Student Services Open House, & Workshops

**Wednesday**  
August 14

● Senate Retreat, Workshops, & Adjunct Institute

**Thursday**  
August 15

● Networking Event, SAC Division & Department Meetings

**Friday**  
August 16

● Chair Institute & More Workshops!



100  
1915 - 2015

17,000  
STUDENTS





SANTA ANA  
COLLEGE

Earned  
**Large  
College  
Status**  
in 2023-2024



Medium  
College Status

**\$6.9 M**

in annual funding

**10,000-  
20,000**

FTES



Large  
College Status

**\$7.9 M**

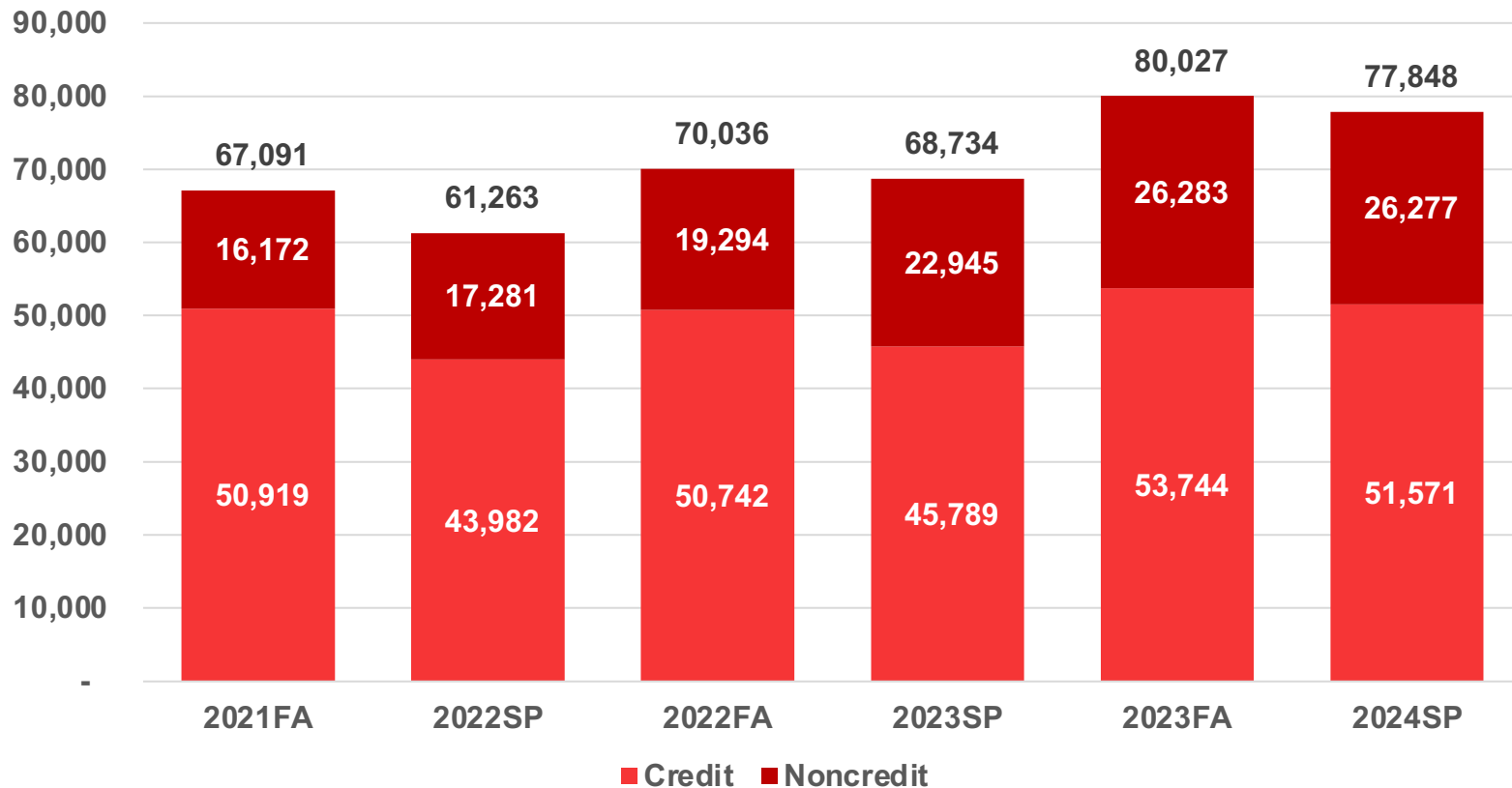
in annual funding

**OVER  
20,000**

FTES

**About \$1M in Increased Annual Funding**

# Enrollment - 2021-2024

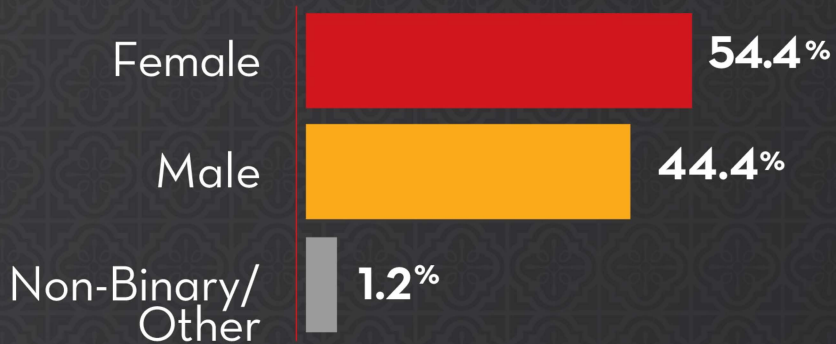




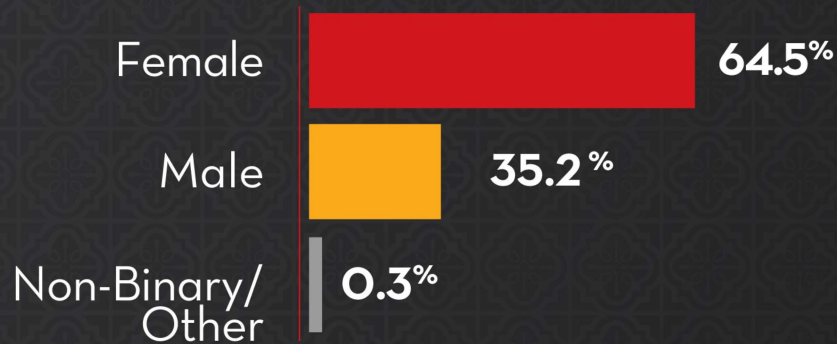
# DEMOGRAPHICS OF STUDENTS SERVED\*

\* DATA FROM FALL 2024

## Credit Classes



## Noncredit Classes



# 77,848

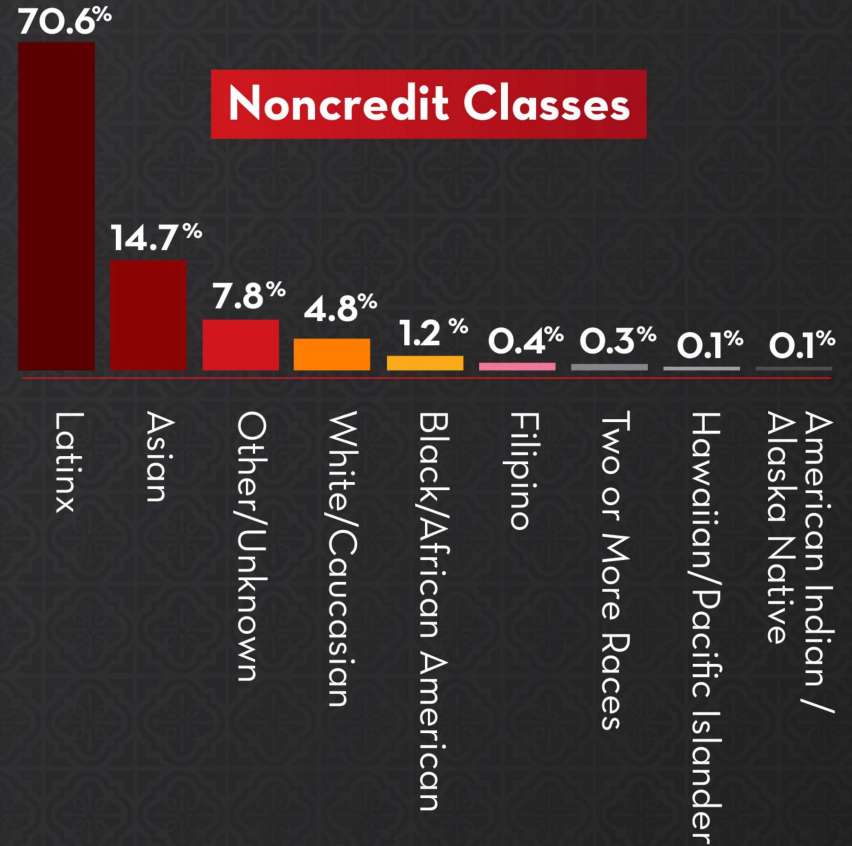
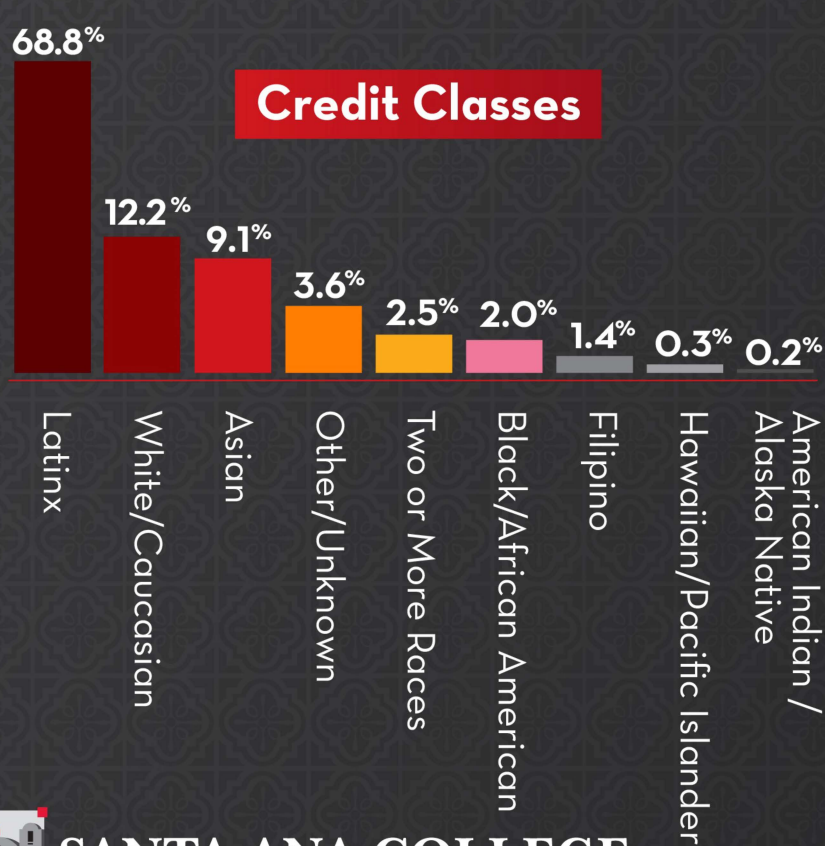
## Spring 2024 Enrollment



SANTA ANA  
COLLEGE

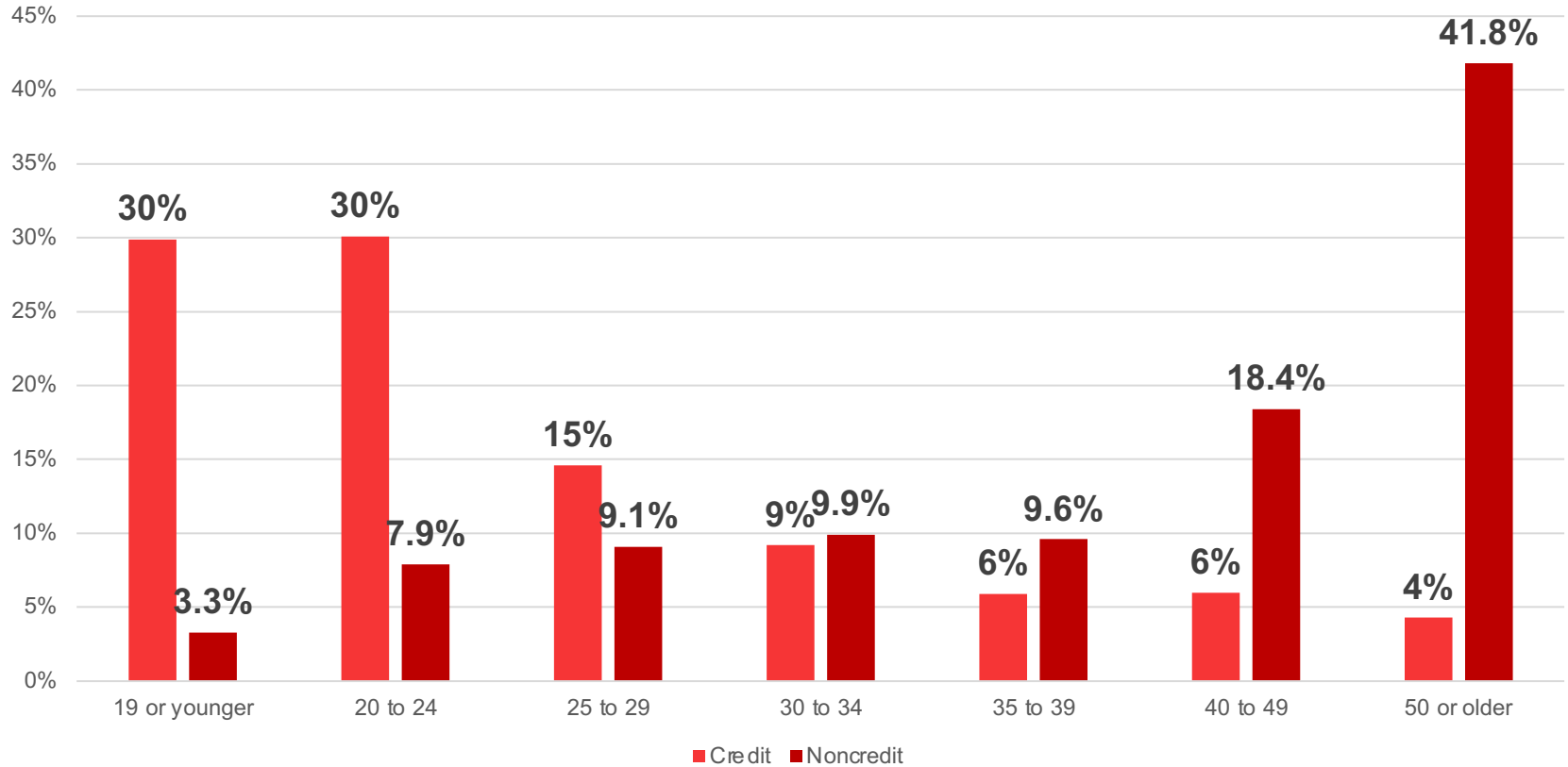
# DEMOGRAPHICS OF STUDENTS SERVED\*

\* DATA FROM FALL 2024



SANTA ANA COLLEGE

# Age (Fall 2024)



# CJA Center Status

Center Status application submitted for the **Orange County Sheriff's Regional Training Academy** in Tustin and was **approved**. This brings an **ADDITIONAL \$1 MILLION** to support teaching/learning.



# California Virtual Campus - Online Education Initiative (OEI)



**#2 QUALITY REVIEWED COURSES**



SANTA ANA COLLEGE



# WHY WE'RE HERE



SANTA ANA COLLEGE

# SANTA ANA COLLEGE

0:02 / 3:41



# Baccalaureate Degree Programs (BDP) at SAC

**Current**



Occupational  
Studies

**Fall 2025**



Paralegal  
Studies

**Cycle Four**  
(Provisional  
Approval)



Automotive  
Technology

***Affordable, quality education at SAC!***  
*Students can earn a BA degree for about \$11,000.*



**SANTA ANA COLLEGE**

# Equity Planning

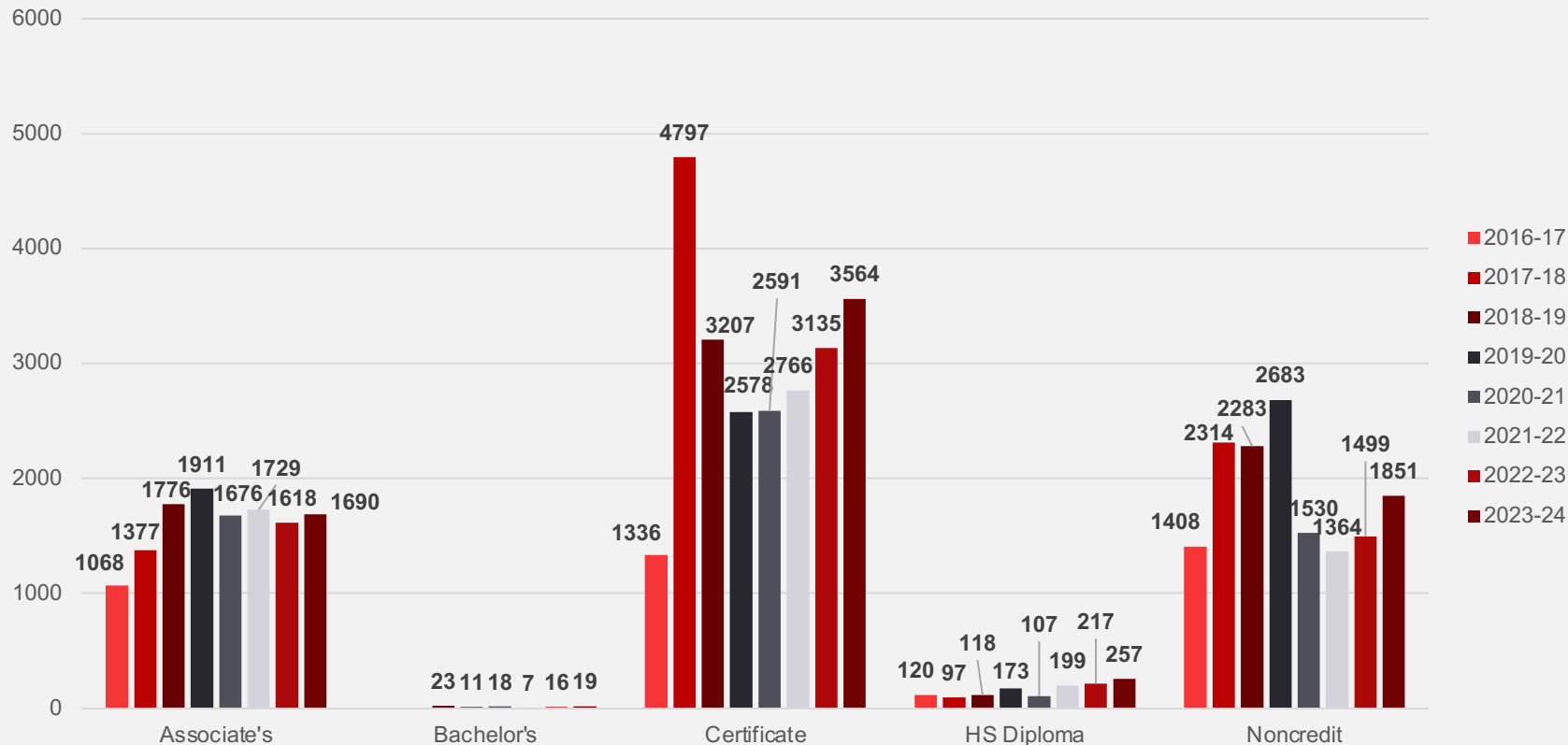
- Increase Degree, Certificates & Transfers
- Integrated Planning
- Guided Pathways
- Student Equity
- Close Equity Gaps
- Bridge Students from Noncredit to Credit



President's Focus in 2025

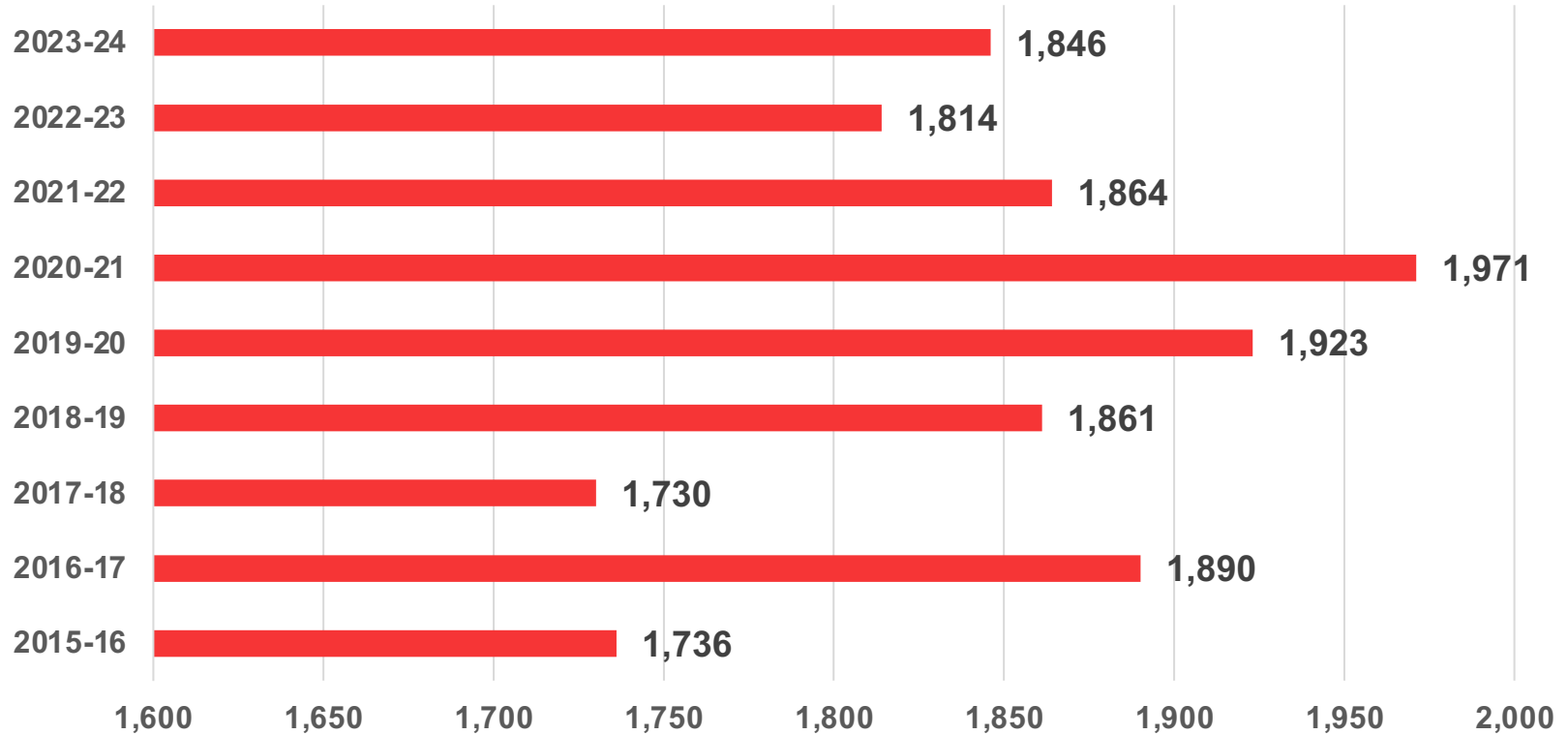


# Degrees/Certificates Completed - 2016-2024



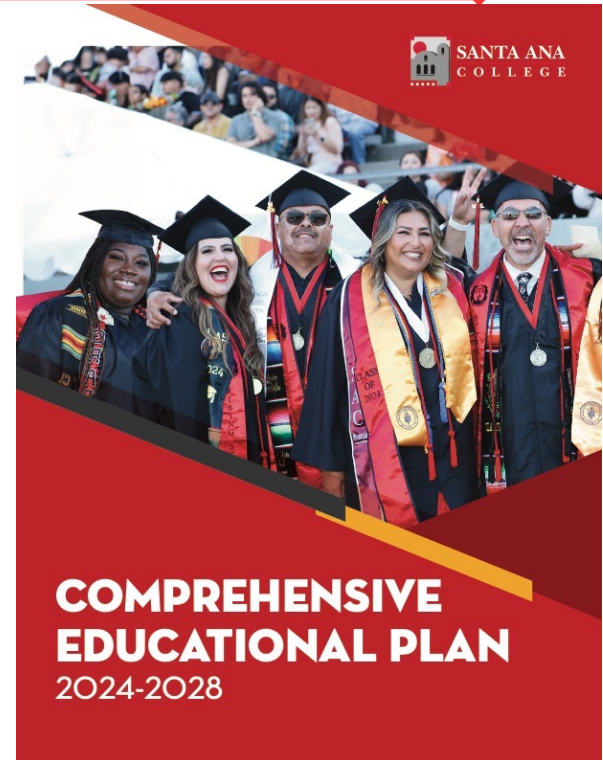


# Transfers 2015-2024



# Comprehensive Educational Plan (CEP) 2024-2028

- 2024-2028
- **Thank you** to the Task Force!
- **Access** CEP via QR code





**GOAL**

**1**

Ensure equitable access to innovative educational programs and comprehensive support services fostering student success in achieving workforce readiness, successful transfer opportunities and personal developmental goals.

**GOAL**

**2**

Expand partnerships to optimize educational options and opportunities through innovative services and equitable practices.

**GOAL**

**3**

Cultivate equitable campus culture to support student, faculty, and staff belonging and success.

**GOAL**

**4**

Strengthen supportive infrastructure that facilitates equity, a sense of belonging, and trust among faculty, staff, and students.





## GOAL

### 1

Ensure equitable access to innovative educational programs and comprehensive support services fostering student success in achieving workforce readiness, successful transfer opportunities and personal developmental goals.

#### Objective 1.1

Eliminate barriers to educational opportunities.

#### Objective 1.2

Diversify learning opportunities to meet the needs of students.

#### Objective 1.3

Promote and expand student support services to address holistic needs of students, particularly from marginalized and/or underrepresented groups.

#### Objective 1.4

Increase skill development, credential attainment, transfer rates and living wage.



## GOAL

## 2

Expand partnerships to optimize educational options and opportunities through innovative services and equitable practices.

### Objective 2.1

Identify current and develop potential partnerships to meet community needs.

### Objective 2.2

Provide diverse educational options to support student academic goals and success.

### Objective 2.3

Foster innovative, student informed services to facilitate academic achievement.

### Objective 2.4

Assess and improve current DEIA practices to foster a community of trust and belonging.





## GOAL

### 3

**Cultivate equitable campus culture to support student, faculty, and staff belonging and success.**

#### **Objective 3.1**

Leverage cutting-edge technology to remove barriers and improve the employee and student experience.

#### **Objective 3.2**

Utilize accurate and reliable disaggregated information to make informed decisions.

#### **Objective 3.3**

Collaborate and leverage professional development opportunities across partnerships.

#### **Objective 3.4**

Ensure participatory governance practices are understood, followed, utilized and evaluated regularly.



## GOAL

### 4

**Strengthen supportive infrastructure that facilitates equity, a sense of belonging, and trust among faculty, staff, and students.**

#### **Objective 4.1**

Improve physical and virtual infrastructure and enhance technology resources to create conducive learning environments and promote sustainability in support of the overall education experience and academic success of students.

#### **Objective 4.2**

Maximize funding and allocate resources to support equitable student achievement, sustainable growth, innovation, and competitive advantage.

#### **Objective 4.3**

Provide comprehensive professional development programs that empower faculty and staff with continuous learning opportunities, fostering expertise, innovation, equity, community, and a dynamic educational environment.

# SAC Completes

## GUIDED PATHWAYS



1

CLARIFY THE PATH

2

ENTER THE PATH

3

STAY ON THE PATH

4

ENSURE LEARNING



SANTA ANA COLLEGE

Disproportionate Impact in Vision for Success Metrics (PI)	AA/AS	AST	Certificate	Units for AA/AS	Transfer	Job in Field of Study
<b>Gender</b>						
Female						
Male						
Non-Binary/Other/Unreported						
<b>Ethnicity</b>						
American Indian or Alaskan Native						
Asian						
Other/Unreported						
Black or African American						
Hispanic/Latino						
Native Hawaiian or Other Pacific Islander						
Two or More Races						
White						
<b>Age</b>						
19 or younger						
20 to 24						
25 to 29						
30 to 34						
35 to 39						
40 to 49						
50 or older						





SANTA ANA COLLEGE  
School of Continuing Education

REGISTRATION IS NOW OPEN FOR  
**SUMMER SEMESTER!**

SAC has  
the  
**LARGEST  
NONCREDIT  
PROGRAM**  
in the State



¡Las inscripciones ya están abiertas para el  
**SEMESTRE DE VERANO!**

Chúng tôi đã bắt đầu nhận ghi danh cho  
**KHÓA HỌC MÙA HÈ!**



SANTA ANA COLLEGE



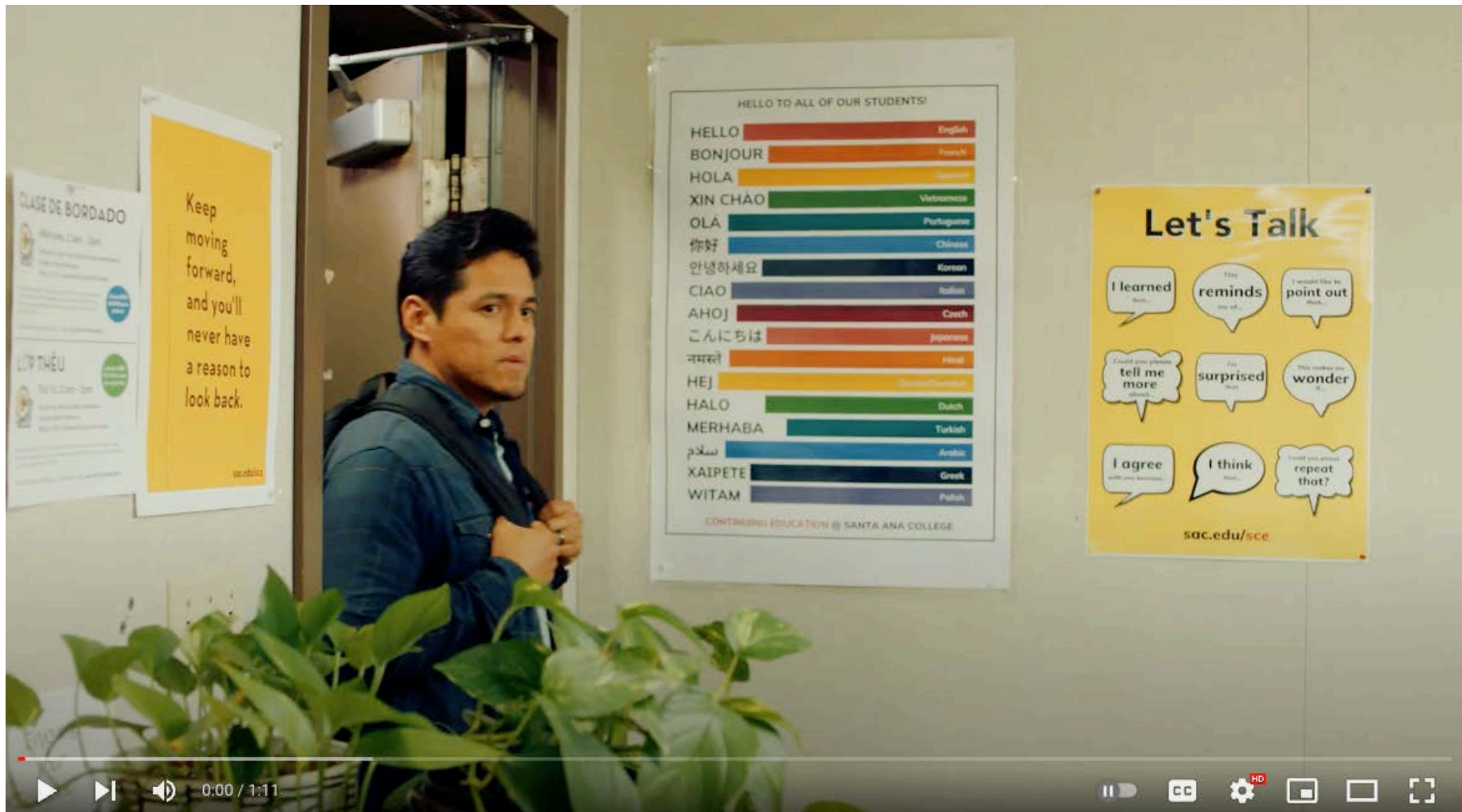


# Accepting Top 100%

*Create a bridge from noncredit to credit programs*



SANTA ANA COLLEGE



# Economic Impact Report







SANTA ANA COLLEGE

# IS FUELING THE ECONOMY



In 2021, SAC served

**48,914**  
**STUDENTS**  
**ANNUALLY**

for credit and noncredit courses.



## CAREER FOCUSED

Career Education programs are aligned to the top middle-skill and emerging occupations in Orange County, including business, nursing, healthcare support, manufacturing and more.<sup>1</sup>

Students earn **\$4.90** in higher future earnings for every dollar that students invest in their education at SAC, with an

**ANNUAL RATE**  
**OF RETURN OF**

**19.3%**<sup>2</sup>



# 1.3 BILLION

Santa Ana College, its alumni and students generated **\$1.3 BILLION** in added income to the Orange County Economy. <sup>2</sup>



# 1.1 BILLION

Alumni employed in Orange County contribute **\$1.1 BILLION** in added income, which is equivalent to supporting **10,985 JOBS**. <sup>2</sup>

# \$717 MILLION

Alumni will receive a present value of **\$717 MILLION** in increased earnings over their working lives. <sup>2</sup>

# \$1 → \$1.70



For every tax dollar spent on educating students at SAC, taxpayers will receive an average **OF \$1.70** in return over the course of the students' working lives or **3.2% ANNUAL RATE OF RETURN**. <sup>2</sup>

# Learn more at SAC.EDU



1. RSCCD Workforce Development Presentation Report and Orange County Economic Forecast.
2. The Economic Value of Santa Ana College Main Report June 2023.





# PROFESSIONAL DEVELOPMENT

Amberly Chamberlain

Faculty Professional  
Development Coordinator



# Special Thank You To...

- **Convocation Planning Team,**
- **All distinguished guests & speakers, and**
- **YOU for joining us today!**

*Immediately following Convocation today, please **join us for:***

- **Lunch in the Small Gym W-107.**
- **Make sure you checked in and received your lunch voucher.**





**SANTA ANA**  
**COLLEGE**



# LEADING WITH EQUITY: SAC COMPLETES

Guiding students to upskill, complete certificates, degrees or university transfer for long-term career success.

**FALL 2024 CONVOCATION**  
**AUG. 13, 2024 | PHILLIPS HALL**

**HOSTED BY SAC PRESIDENT**  
**DR. ANNEBELLE NERY**